



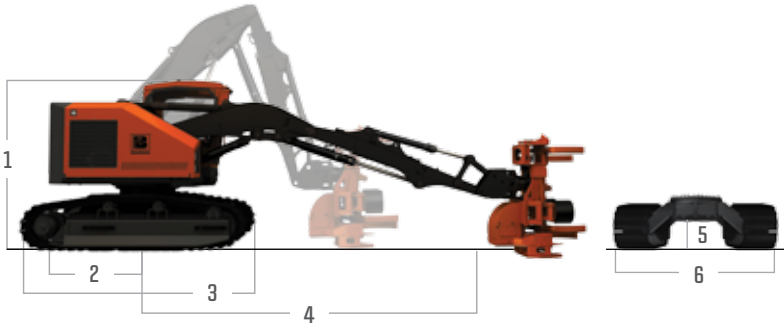
# » 240 HARVESTER/ FELLER BUNCHER

SPECIFICATIONS



The Barko® 240 Track Harvester/Feller Buncher incorporates expertise from leading engineers, end users and forestry professionals. Featuring intelligent controls, intuitive maintenance features and a superior drawbar pull (better than 1.3:1 ratio), the Barko 240 is the most powerful machine in its weight class and offers industry-leading dependability.

# SPECIFICATIONS



## DIMENSIONS

<b>1</b>	<b>Transportation Height</b>	10' 9" (328 cm)
<b>2</b>	<b>Center to Rear of Counterweight</b>	72" (189 cm) from swing center
<b>3</b>	<b>Track Length</b>	13' 1" (399 cm)
<b>4</b>	<b>Boom Reach</b>	21' 2" (645 cm) from attachment pin to swing center
<b>5</b>	<b>Ground Clearance</b>	26.2" (66.5 cm)
<b>6</b>	<b>Overall Width</b>	9' 4" (284.5 cm) with 600mm pads
	<b>Undercarriage Size/Pitch</b>	D-5, 7.5" (190 mm)
	<b>Gross Vehicle Weight</b>	45,000 lbs (20,412 kg) (est.) without attachment

## ENGINE

<b>Model/Power</b>	220 HP (164 kW) Cummins® QSB6.7 Tier III
<b>Cooling Package</b>	<b>Fan</b> 36 in. (914 mm) diameter Flexaire® reversible fan – pneumatically operated, IQAN® system controlled, engine driven
	<b>Heat Exchanger</b> 3 Cores – CAC, radiator & hydraulic. Pressure bypass integrated in system valve manifold for hydraulic cooler
<b>Fuel Tank</b>	130 gal. (492 L)

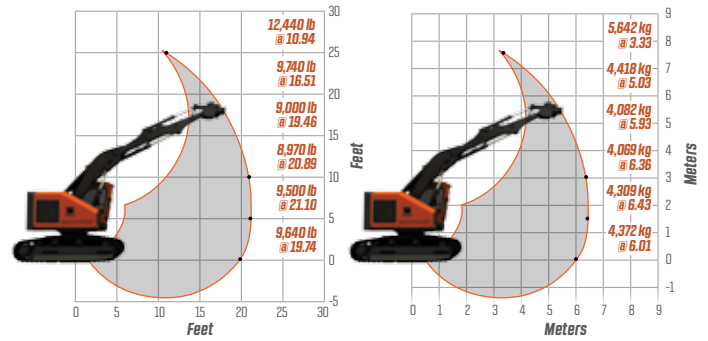
## HYDRAULIC SYSTEM

<b>Control System</b>	IQAN: infinite variable control, individual operator settings, onboard diagnostics
<b>Main Pump</b>	Load sensing pressure compensated operating at 4,500 psi (310 bar)
<b>Secondary Pump</b>	Dedicated for head functionality
<b>Hydraulic Tank</b>	120 gal. (454 L)

## OPERATOR STATION

<b>Cab</b>	Patent-pending forward sliding design
<b>Window</b>	1/2" (12.7 mm) Lexan® (harvester) or 1 1/4" (31.75 mm) Lexan (feller buncher) with air knife system; oversized skylight, sliding rear window
<b>Standard Features</b>	Exterior LED lighting, heated air-ride seat, large access door, full climate control, AM/FM radio with MP3 auxiliary, in-cab storage, cup holder, cell phone holder, dome light

# BOOM SWEEP



## PERFORMANCE

<b>Maximum Tractive Effort</b>	65,833 lbf (298.6 kN) (gross)
<b>Drawbar Pull</b>	1.3 to 1 ratio
<b>Ground Pressure</b>	7.63 psi (600 mm shoes), 6.54 psi (700 mm shoes)
<b>Maximum Travel Speed</b>	2.47 mph (3.98 km/h)
<b>Swing System</b>	Continuous rotation with dual swing drives
<b>Swing Torque</b>	50,787 ft-lbf at 3,770 psi (68,858 Nm at 260 bar)
<b>Swing Bearing</b>	Heavy-duty, oversized, 53.5" (1,359 mm) outside diameter

# MAINTENANCE FEATURES & OPTIONS

## STANDARD FEATURES

On-board air compressor with work tool capability, tool storage areas under cab and track frames, sloped cowling

## OPTIONS

Barko CF-18 fixed harvesting head	Fire suppression
OEM fixed, dangle and feller buncher heads	Various track shoe options in 600mm & 700mm widths
Proheat®	Rear view camera with 7" LED display
Hydraulic tank vacuum pump	SiriusXM® Radio
Electric fill pump	Front window shade

\* Specifications are subject to change.



## BARKO HYDRAULICS, LLC

One Banks Ave.  
Superior, WI 54880

P: 715.395.6700  
info@barko.com | www.barko.com



<b>1 Year</b>	Full machine and attachment
<b>2 Years</b>	Powertrain and major hydraulic components
<b>3 Years</b>	Machine structure

# WARRANTY